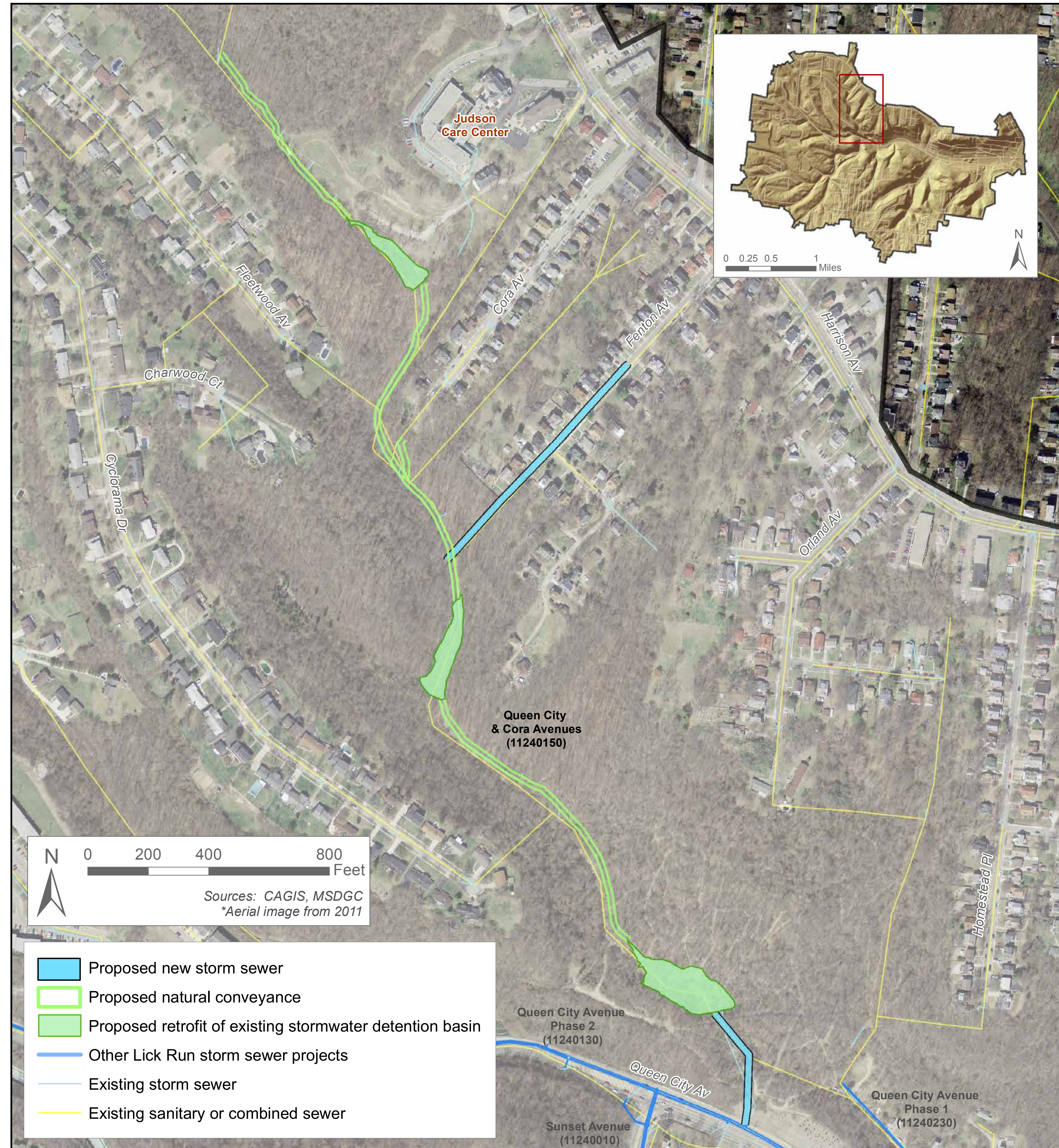


# QUEEN CITY AND CORA AVENUES

Starting in the Fall

Anticipated Construction: Fall 2016 - Fall 2017

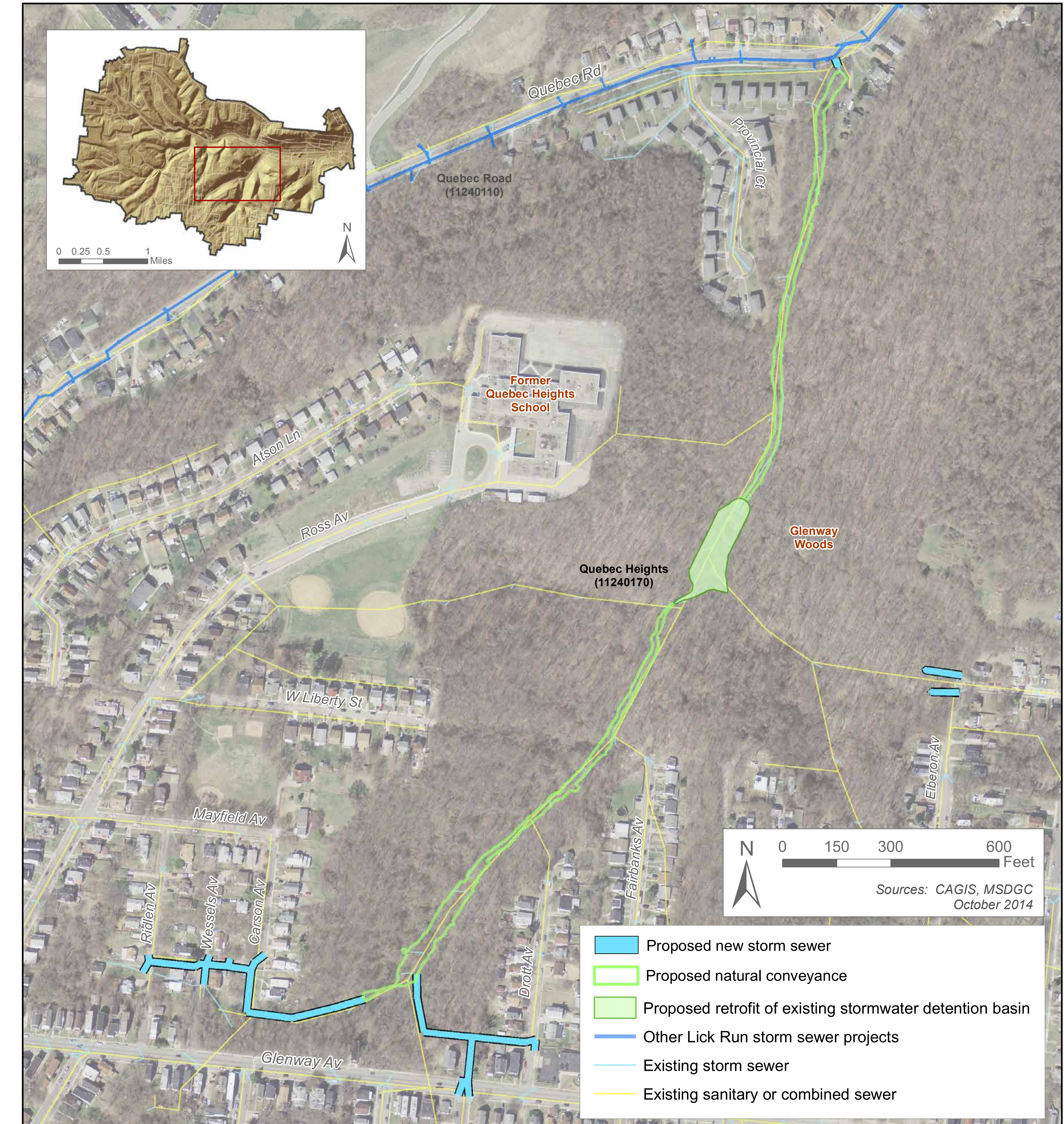


**Project Description:** Green infrastructure project in ravine behind Judson Care Center. Restoration of a stream that was enclosed in a combined sewer. Includes the retrofit of three existing stormwater detention basin and new storm sewer along Fenton Avenue and at bottom of the ravine. It will connect to storm sewers along Queen City Avenue.

# QUEBEC HEIGHTS

Starting in the Fall

Anticipated Construction: Fall 2016 - Fall 2017



**Project Description:** Green infrastructure project in Glenway Woods. Restoration of a stream that was enclosed in a combined sewer. Includes the retrofit of one existing stormwater detention basin and new storm sewer across Glenway and along Ridlen, Wessels, Carson and Drott avenues. It will connect to storm sewers along Quebec Road.