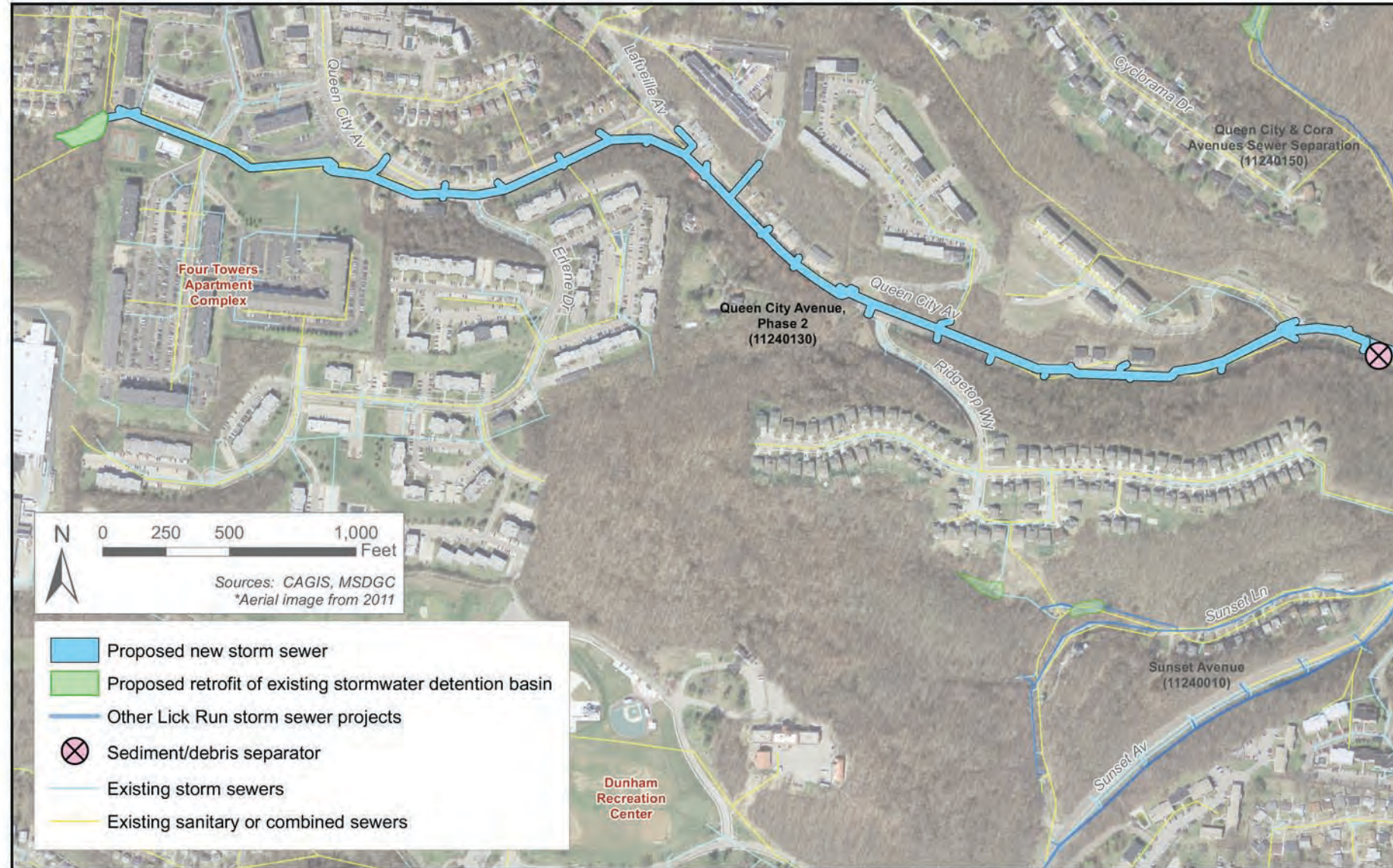


# QUEEN CITY AVENUE PHASE 2

## In Design

Anticipated Construction: Winter (Dec.) 2015 - Winter (Dec.) 2017

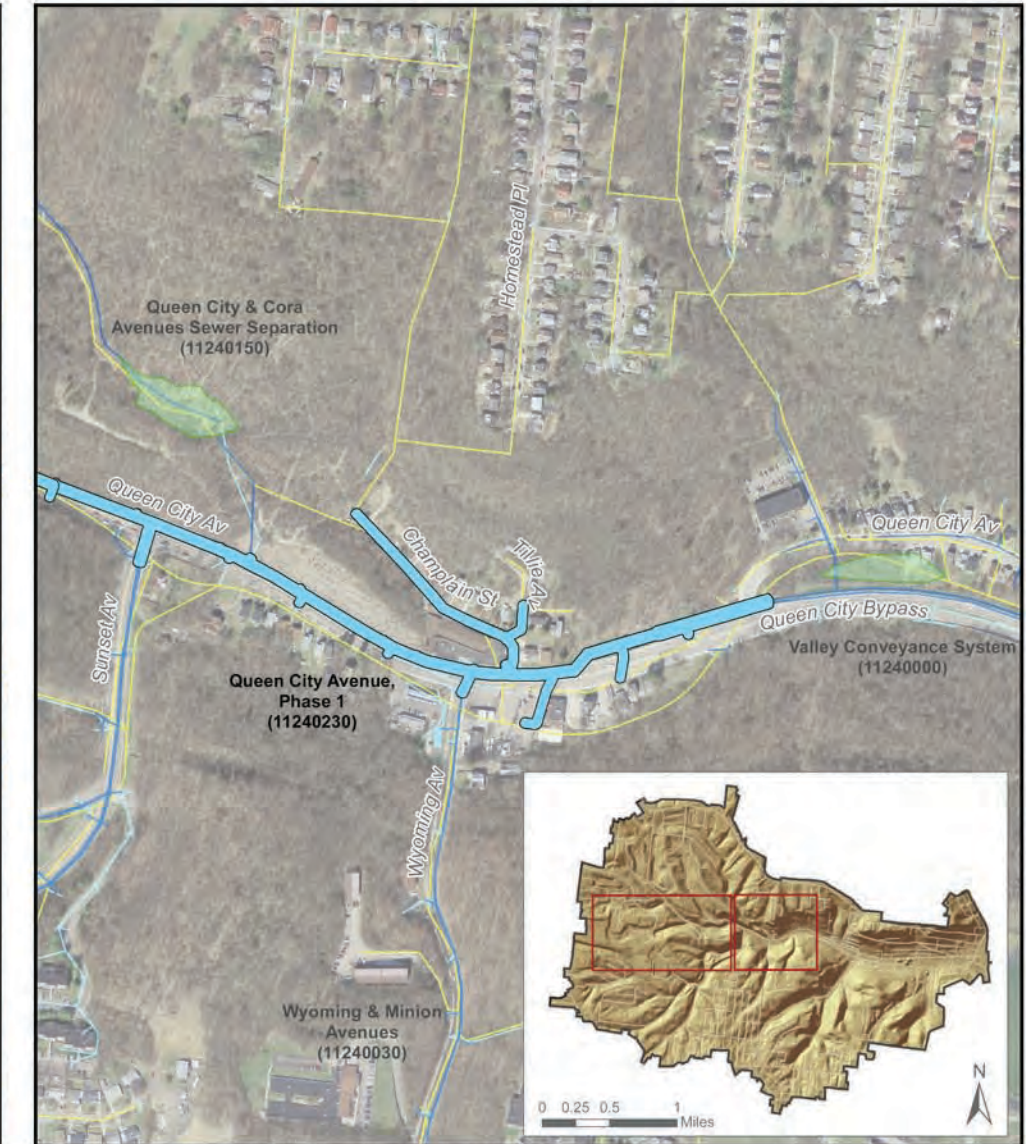


**Project Description:** About 6,000 linear feet of new storm sewer will be installed along Queen City Avenue between Sunset Avenue and an apartment complex off East Tower Drive. Also includes the retrofit of one existing stormwater detention basin. This project will remove about 94 million gallons of stormwater from the combined sewer system during a typical year of rain.

# QUEEN CITY AVENUE PHASE 1

## Under Construction

Fall 2013 - Spring 2015



**Project Description:** About 3,900 linear feet of new storm sewer will be installed along Queen City Avenue between the Queen City Bypass and Sunset Avenue. Also includes new storm sewer along Tillie Avenue and Champlain Street and short segments on Wyoming and Sunset avenues. This project will remove about 27 million gallons of stormwater from the combined sewer system during a typical year of rain.