

## Long-term Watershed Vision Plan

### How could MSD's investment support future public/private investments?

Additional investment in the Lick Run watershed - identified in the preliminary long-term vision plan - could be achieved over time with support from public and private investment. Long-term investment is envisioned to include:

- viable, walkable **neighborhood business district**
- **enhanced transportation network**
- **multi-use Cultural Trail**
- **market-driven land development**
- additional **streetscape improvements**
- **enhanced civic/recreation hub**
- additional **public amenities** (e.g., benches, lighting, trash receptacles, wayfinding)

\*The Long-term Watershed Vision Plan (not shown) can be viewed in the presentation for Community Design Workshop #3. Visit: [www.projectgroundwork.org/lickrun](http://www.projectgroundwork.org/lickrun) and follow the links under Community Involvement.

## In Your Words...

Written comments from workshop participants:

**"We can see our money being used in a more useful way: creating waterway, business opportunities, recreation."**  
~ resident, Lick Run Watershed

**"It needs to be sure not to remove current businesses but seek rather to provide relocation opportunities for them to remain and be a part of the new revitalized community."**  
~ resident, Lick Run Watershed

**"[The] plan selection is most useful to Lick Run Valley residents and most economical to MSD patrons also."**  
~ property owner

**"The plan has gotten the support of the Lick Run Valley inhabitants."**  
~ resident, Lick Run Watershed

For updates on the Lick Run Project, please continue to visit: [www.projectgroundwork.org/lickrun](http://www.projectgroundwork.org/lickrun). You can also contact MSD Engineering Customer Service at (513) 557-3594 or send an e-mail to [MSD.Communications@cincinnati-oh.gov](mailto:MSD.Communications@cincinnati-oh.gov).



## Lick Run Community Design Workshop #3

On Thursday, February 23, 2012, the Metropolitan Sewer District of Greater Cincinnati (MSD) hosted its third of three "Community Design Workshops" at Orion Academy (charter school) in South Fairmount to gather public input on the proposed Lick Run Alternative Project.

### What's the Lick Run Alternative?

The Lick Run Project is a series of underground storm sewers and natural, above ground waterways to transport stormwater and natural drainage to the Mill Creek. This storm sewer separation project would eliminate about 800 million gallons of combined sewer overflows (CSOs) annually into the Mill Creek. It is one of several watershed-based solutions being proposed to the U.S. EPA and other regulators as an alternative to a deep, underground storage tunnel and enhanced high-rate treatment facility.

The central element of this project is an urban waterway in South Fairmount between Queen City and Westwood avenues, east of White Street.

### Focus of Community Design Workshop #3

The workshop featured an overview presentation, Q&A, and small group breakout sessions to evaluate the strengths, weaknesses, and potential refinements for the preliminary Lick Run Master Plan. The plan was developed with input from the first two Community Design Workshops, held in August and October 2011. The results of Community Design Workshop #3 are summarized inside.

### Preliminary Lick Run Master Plan

The preliminary Lick Run Master Plan contains the Lick Run Alternative project, including a refined preliminary design concept for the proposed urban waterway in South Fairmount. In addition, the plan includes a preliminary Long-term Watershed Vision Plan that identifies additional public amenities that could be achieved over the long term through public or private investment.

The three Community Design Workshops played a critical role in this process. The community's willingness to share ideas, suggestions and concerns, complete surveys and engage in constructive dialogue helped directly shape the master plan. Although this phase of the effort is complete we encourage you to remain engaged and informed.

### What's Next?

Preliminary findings on the Lick Run Alternative and the tunnel will be presented to the Hamilton County Board of County Commissioners for consideration in March 2012. In December 2012, MSD will submit its preferred remedy for resolving CSOs in the Lower Mill Creek watershed to the U.S. EPA and other regulators.

## Major Findings from the Workshop

### Breakout Session Feedback:

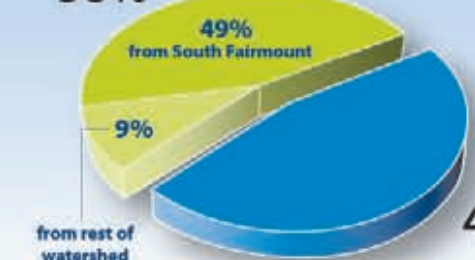
- Perceived **strengths** of the proposed urban waterway include: **lower up-front & lifetime costs, potential for urban revitalization, neighborhood beautification, ecological benefits, and attention paid to the historic fabric.**
- Perceived **weaknesses** of the proposed urban waterway include: **impact to existing businesses, traffic and parking issues, lack of identified funding, and lack of clear economic benefit provided by green space.**
- Participants reinforced the importance of **preserving as many existing and historic buildings as possible, addressing public transportation opportunities, encouraging urban infill for future development, and coordinating** with future Harrison Avenue and Western Hills Viaduct projects.

**93%** of respondents support the proposed Lick Run Alternative, compared to 5% who support the deep tunnel and 2% who are unsure. (41% of attendees responded to this question)

**71%** of respondents attended a prior Community Design Workshop. (35% of attendees responded to this question)

**93%** of respondents said that after seeing the presentation, they have a better understanding of what MSD is proposing to implement as part of the alternative solution for CSO reduction. (47% of attendees responded to this question)

**58%**



**98 people** attended the workshop

- attendees live, work or own property in the Lick Run Watershed
- attendees came from outside the watershed; many represented city and county agencies

## LICK RUN WATERSHED

RESULTS OF COMMUNITY INPUT  
COMMUNITY DESIGN WORKSHOP #3

FEBRUARY 23, 2012



# South Fairmount Corridor

These preliminary design concepts for a proposed urban waterway in South Fairmount (Cincinnati, Ohio) were developed by the Metropolitan Sewer District of Greater Cincinnati (MSD) with input from the community and public/private partners. The concepts were presented for public review at the Lick Run Community Design Workshop #3 on February 23, 2012 in Cincinnati as part of a preliminary Lick Run Master Plan. They will undergo additional refinement prior to integration into a final plan. The U.S. EPA has final approval over implementation of this project.

## Perceived Strengths

- Potential for urban revitalization, including the promotion of urban infill and a more livable, walkable community
- Enhanced beauty and aesthetics of neighborhood
- Ecological and environmental benefits
- Lower up-front & lifetime costs
- Attention given to neighborhood's history
- Improved neighborhood identity & quality of life

## Perceived Weaknesses

- Impact on local jobs and businesses
- Parking accommodations fall short of demand
- Lack of identified funding
- Economic benefits of green space not clear
- Traffic noise could detract from ambiance of the waterway
- Waterway could split the neighborhood north and south

## Suggested Refinements

- Preserve existing and historic buildings where possible
- Address public transportation
- Create incentives for homeowner implemented sustainable strategies (i.e., rain barrels, rain gardens)
- Include farmers market & dog park from CDW#2
- Coordinate with future Harrison Avenue & Western Hills Viaduct
- Promote urban infill (redevelopment of existing properties)

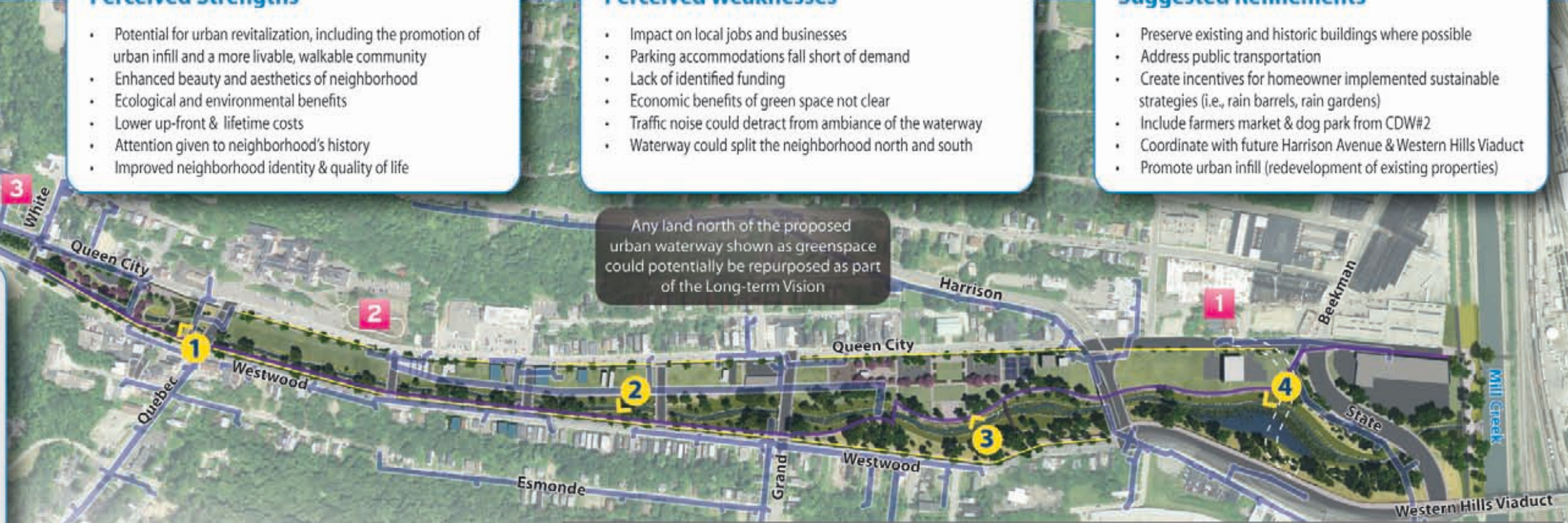
## Preliminary Urban Waterway Plan

This plan shows the preliminary urban waterway concept, which was developed based on public feedback from the first two Community Design Workshops and through discussions with local public agencies (e.g., Cincinnati Department of Transportation & Engineering, Cincinnati Recreation Commission), community groups (e.g., South Fairmount Business Association, South Fairmount Community Council), and other partners.

If approved by the Board of County Commissioners and Regulators, this plan represents the "Base Project," or what could be constructed by 2018 to meet MSD's mandated schedule for Consent Decree compliance in the Lower Mill Creek.

**Enabled Impact Projects** (formerly referred to as "Early Success Projects") are pilot projects constructed to demonstrate innovative green infrastructure strategies while helping reduce the volume of stormwater runoff entering MSD's combined sewer system. Examples include bioinfiltration (rain gardens) and pervious pavement.

Any land north of the proposed urban waterway shown as greenspace could potentially be repurposed as part of the Long-term Vision



<b>1</b> Immanuel United Church Enabled Impact Project	<b>2</b> St. Francis Enabled Impact Project	<b>3</b> San Antonio Church Enabled Impact Project
Proposed Storm Sewer	Proposed Green Street Features	Proposed Maintenance/Multi-Purpose Trail
Existing Building	Potential to remain pending additional hydraulic and engineering design refinements	Potential relocation pending partner funding identification and structural integrity of resources

## Headwaters Gateway District



(Looking Northwest) This image depicts the daylighting of stormwater into the proposed urban waterway. The proposed urban waterway will contain water quality features (limestone rock) and a well-vegetated riparian edge. Rain gardens will help to intercept stormwater from Queen City Avenue and direct it into the waterway. Lighting is included to ensure the multi-purpose trail on Westwood is well lit and safe for pedestrians.

## Urban Ravine District



(Looking South toward Westwood) This image depicts the character of the proposed urban waterway through the Urban Ravine. The waterway contains a heavily-vegetated riparian edge, trees, and limestone rock. The height of the retaining wall from Westwood is visible. A pedestrian railing and lighting along the maintenance path and overlooks are included for safety (and as required by code).

## Civic Recreation Hub



(Looking Northwest) This image depicts the character of the proposed urban waterway near the Civic Recreation Hub. Native vegetation is included to help reduce maintenance needs and to provide water quality benefits during high flow events. The pedestrian bridge in the background is above the modeled 100-year floodplain elevation; so during large volume rain events, water elevations would be contained within the heavily-planted areas.

## Eastern Gateway District



(Looking South toward Westwood) This image depicts the character of the proposed urban waterway at the water quality feature. The multi-purpose path provides safe, well-lit access. During low volume rain events, runoff flows north of the water quality feature to Mill Creek. During high volume rain events, water flows both north of and into the water quality feature. This feature provides valuable terrestrial and aquatic habitat.