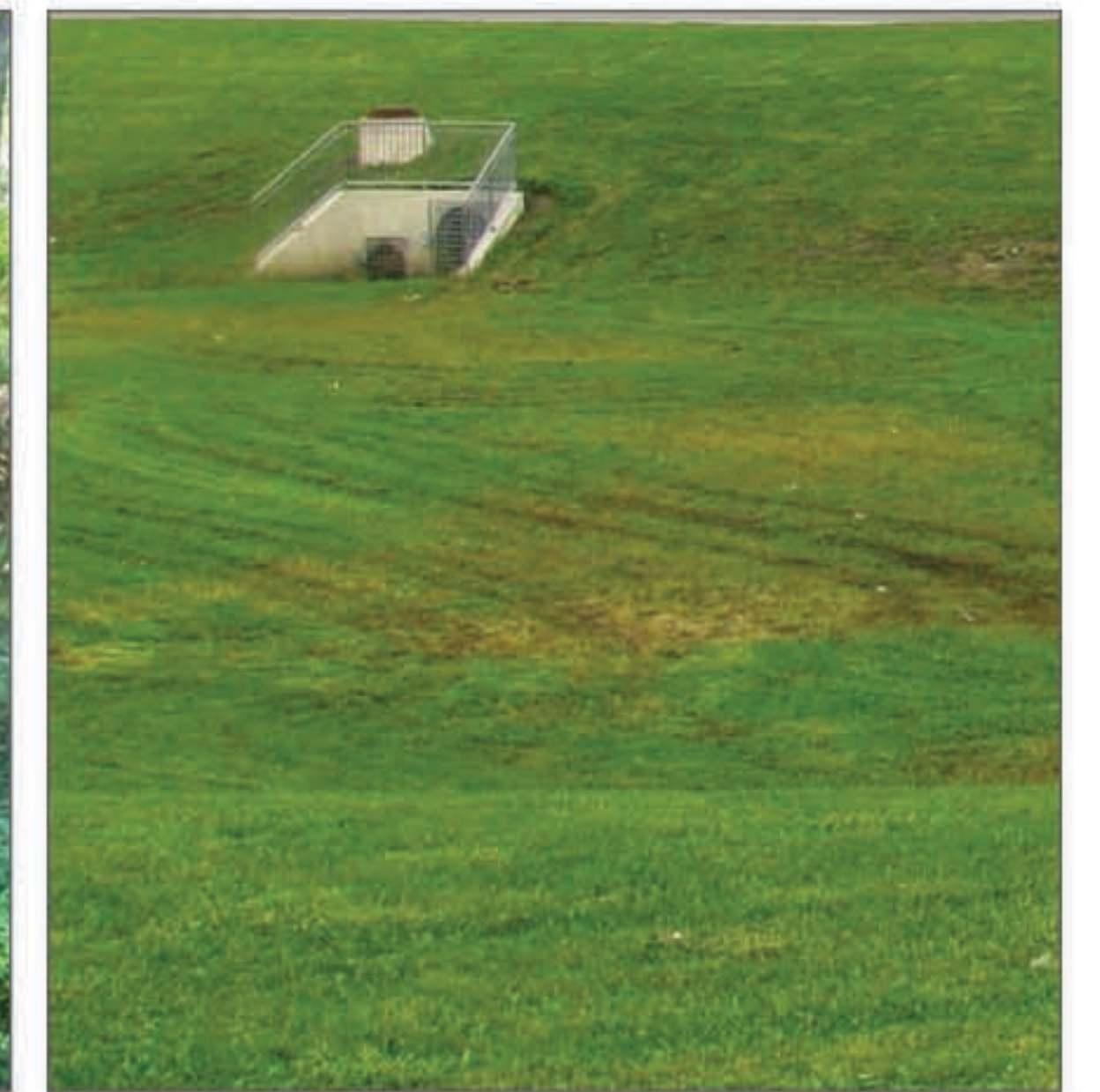


KINGS RUN PROJECT, PHASE A-1 STORMWATER DETENTION BASINS 1 & 2

Construction: Early 2016 - Fall 2016



Photo of Basins 1 & 2 area



Example of basin similar to Basin 2
(not actual)

Basin 1

- Existing low spot
- 0.6 acres
- Sloped sides, ~8 feet deep
- Channel to direct low flows to outlet
- Planted with grass/native grasses
- Discharges slowly to combined sewer

Basin 2

- Existing low spot
- 0.3 acres
- Sloped sides, ~10 feet deep
- Planted with grass/native grasses
- Discharges slowly to combined sewer