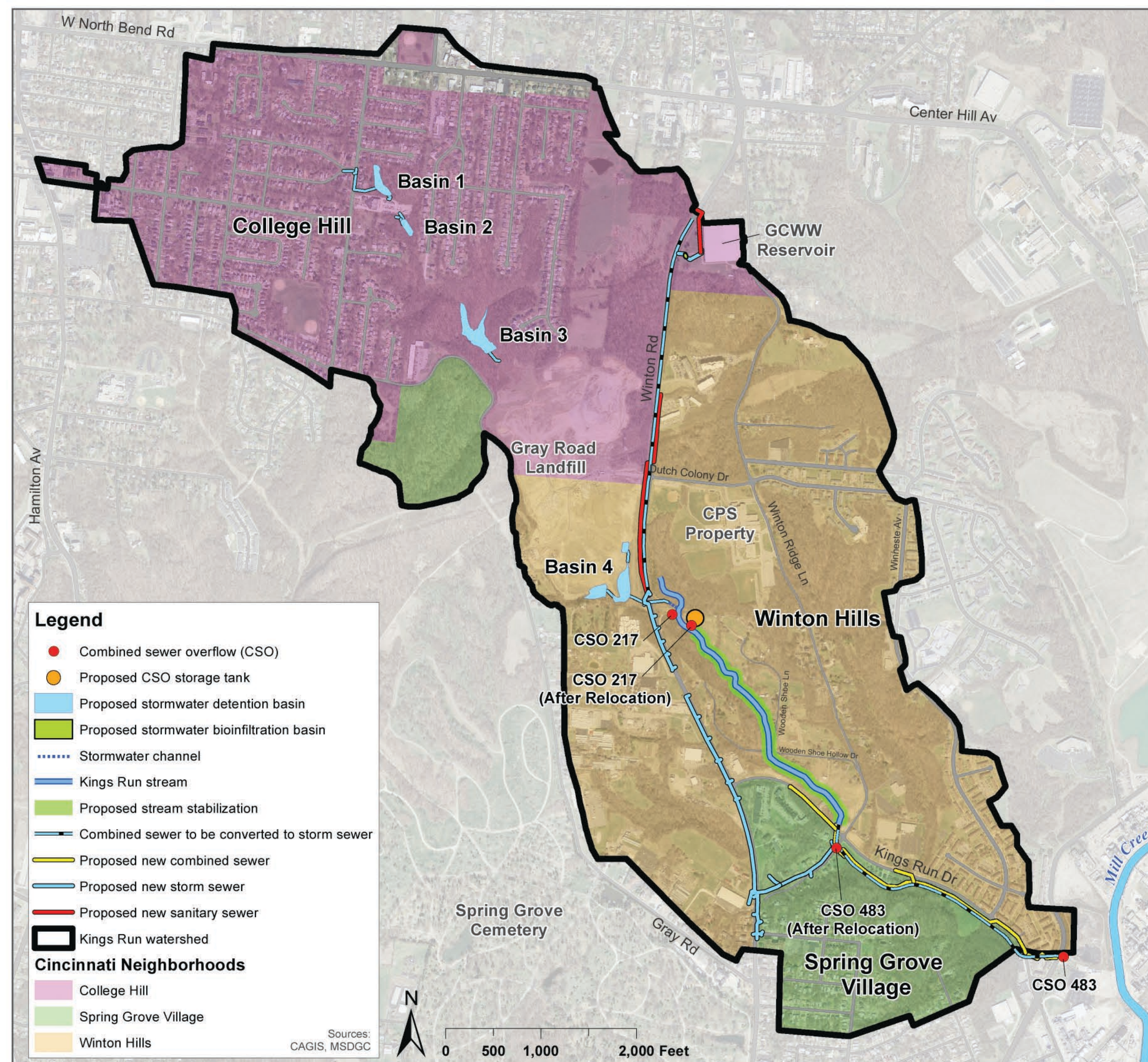


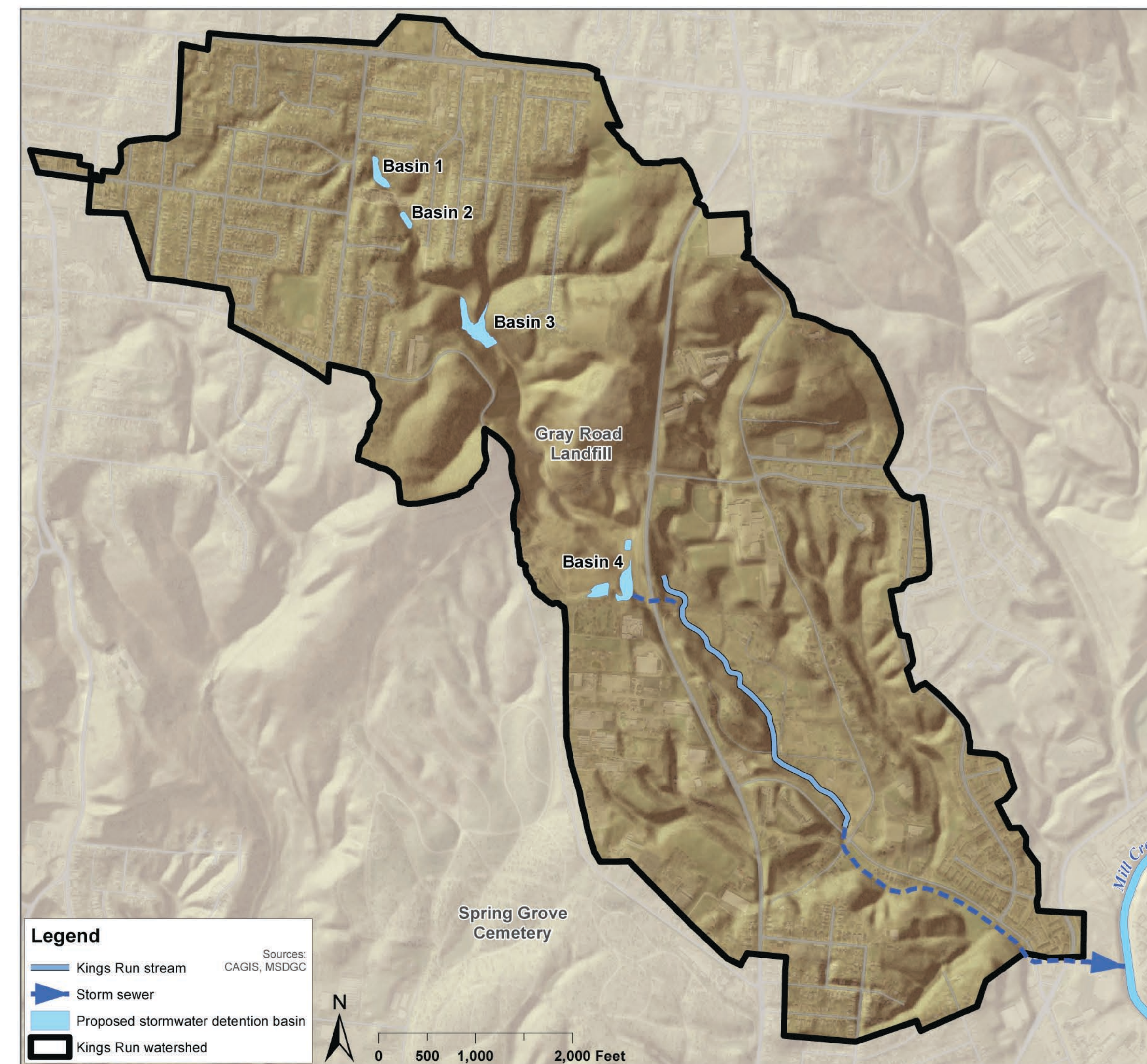
KINGS RUN PROJECT OVERVIEW

Construction: 2016 - 2018

Kings Run Project Map (all phases)



Restored connection between Kings Run stream and the Mill Creek



- 4 phases: A-1, A-2, B and C
- Projects focus on managing stormwater and reducing CSOs
 - Restore historical connection between the Kings Run stream and the Mill Creek
 - Reduce overflows at CSO 217 and CSO 483
 - ~ 90% control of combined sewer flows into the Kings Run stream
 - ~ 85% control of combined sewer flows into the Mill Creek



Kings Run stream