

# Communities of the Future Advisory Committee

Welcome

September 22, 2011

# Agenda

- Updates since May meeting
- Integrating Water Quality with Quantity
- Lick Run Master Plan
  - Community Design Workshop #1
  - Community Design Workshop #2
    - Feedback on approach, lessons learned and room for improvement (more discussion within Breakout #1)
- Breakout Discussions
- Next Meeting: Tentative December 8 or 9, 2011

# Presidential Executive Order 13563

## Section 2.1.10 (August 23, 2011)

### Federal Review of CSO Policies

- New integrated permitting approach for dealing with stormwater flows and CSOs
  - Allow municipalities and utilities to develop plans prioritizing wet weather investments
  - Continued flexibility
  - Combined funding for water/wastewater infrastructure needs

# Updates Since May 2011

## MSD Sponsored Events

Bethany House Children's Festival

July 2011

(second year)

Lick Run Watershed Tours  
(over 70+people)

July - August



# Updates Since May 2011

## CFAC Workshops/Events Held

### CFAC Lick Run Technical Planning Review

- Lick Run Wet Weather Strategy Overview
- Lick Run Hybrid Approach for Water Quality and Quantity
- Community Engagement Currently Underway
- Q&A

August 4

All CFAC

### Land Use Policies & Stormwater Best Practices

- Draft report titled “DRAFT Toolbox of Land Use Policies and Best Practices for Addressing Storm Water at the Local and Regional Scale”
- Land Development Code Updates and other relevant topics
- Lick Run Community Design Workshop Overview of Format/Approach
- OUTCOME:** Policy Gap Analysis of Land Development Code Policies to advance to support MSD Consent Decree needs - underway

August 5

Policy  
Subcommittee

### Policy Gap Analysis:

- SMU Updating Stormwater Ordinance to address gaps
- Public Partners to assist in advancing supportive policies/rules that will assist MSD with Consent Decree negotiations

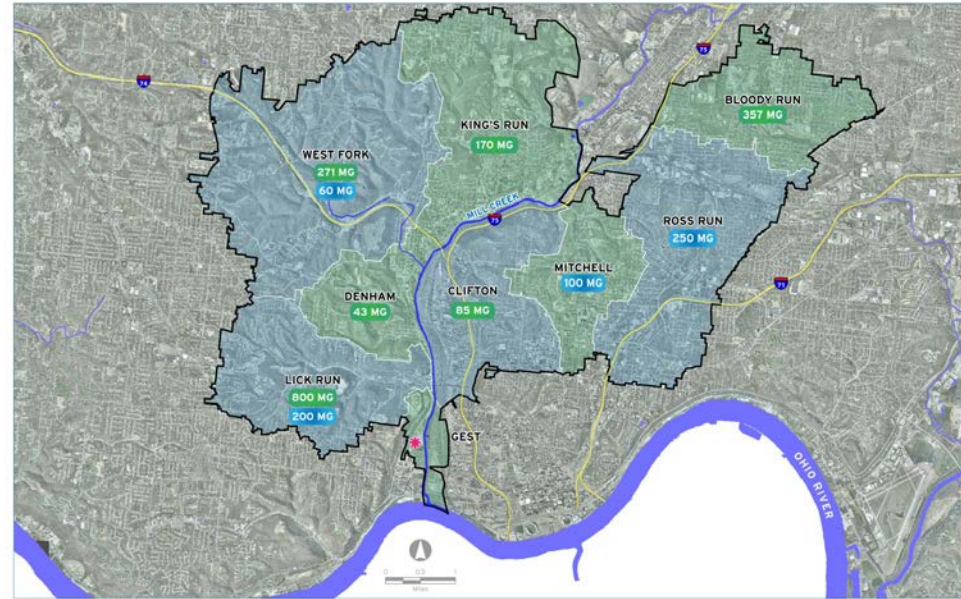
On-going

# Updates Since May 2011

Historic & Cultural Section 106 Review	
State Historic Preservation Office (SHPO)	May 2011
Complete architectural resource identification survey	September 2011
Meet with Federal Lead Agency (ACOE): <ul style="list-style-type: none"><li>•Concurrence by Federal Agency of lead status</li><li>•Concurrence on National Register eligibility status of properties</li></ul>	Late Fall 2011
MSD will begin consultation with “consulting parties” <ul style="list-style-type: none"><li>•<i>CFAC is a consulting party in 106 review, providing information about project impacts, mitigation plans and approaches</i></li></ul>	Following concurrence with ACOE as Lead Agency

# Updates Since May 2011

On-going  
Ground-truthing of  
alternatives identified  
in Lower Mill Creek  
Coarse Evaluations  
(available on-line)



[www.projectgroundwork.org/cfac](http://www.projectgroundwork.org/cfac)

# Updates Since May 2011

## Clean Ohio Grant Submittal Ohio Department of Development



**LICK RUN SUSTAINABLE INFRASTRUCTURE INSTALLATION: BEEKMAN EARLY SUCCESS PROJECT**  
PRELIMINARY SITE PLAN

METROPOLITAN SEWER DISTRICT of greater CINCINNATI

- Low Profile Stormwater Mts
- Seeded Lawns
- Stormwater Conveyance Swale
- Stormwater Retention Basin
- Permeable Paving Lot
- Stormwater Runoff
- Entry Signage
- Bed Houses
- Educational/Interpretive Signage

	Assessment/ Evaluation	Demolition	Infrastructure	Cleanup Remediation
Grant		\$ 221,785	\$ 395,735	\$ 661,834
Local Match	\$ 78,956		\$ 271,641	\$ 65,780

**Total Project Amount: \$1,695,731**

**Grant Request: \$1,279,354**

**Local Dollars to be Allocated if Awarded: \$137,200**

Anticipated Grant Award Notifications: November 2011





# Updates Since May 2011



## The New York Times

### Creek Restoration Keys Cincinnati's Battle Against Urban Blight, Stormwater

By AMANDA PETERKA of CINCINNATI -- As the road dips down into the South Fairmount neighborhood here, the rusted skeleton of a valve factory from the days of the Industrial Revolution rises high in front of a weed-strewn gravel lot. "Welcome to South Fairmount -- Gateway to the West," reads a low sign along the road.

The contrast between the sign's promise for the future and the reality of the once working-class neighborhood is stark. Like the factory, most of the neighborhood's buildings have boarded-up doors and cracked windows. Orange spray paint on a brick home tells would-be thieves that there's no copper to steal inside. Litter lines the streets.

Only a smattering of small businesses are left in the neighborhood about a five minutes' drive from downtown Cincinnati, and the few inhabited houses -- some dating as far back as the 1850s -- belong to some of the city's poorest residents.

The neighborhood has grown steadily vacant and has been largely ignored throughout the decade due to the removal of public housing, a recession, suburban flight and a lack of a strong sense of community.

The population has declined 1.7 percent between 2000 and 2008, and the median household income is just above \$27,000, about \$10,000 less than the rest of the city. Almost half -- 44 percent -- of the housing is estimated to be worth less than \$50,000, according to a document prepared for sewer officials by AECOM Economics.

It's a "black eye for our area of town," said Pete Witte, a local community advocate.

South Fairmount may have stayed ignored if it did not also contain one of the nation's worst combined sewer overflows.

But because of the 3,700-foot-long, 19.5-foot-wide pipe underneath the area, the decaying neighborhood is now part of one of the largest public works projects in Cincinnati's history and one of the nation's biggest experiments in green infrastructure.



# Upcoming Events

## Urban Water Sustainability Leadership Conference ,

Milwaukee, WI: October 4, 2011

## St. Francis Court Apartments

### “Learning Gardens”

- Developing educational and volunteer opportunities for local residents and area schools

## Lick Run Watershed Tours

(October)

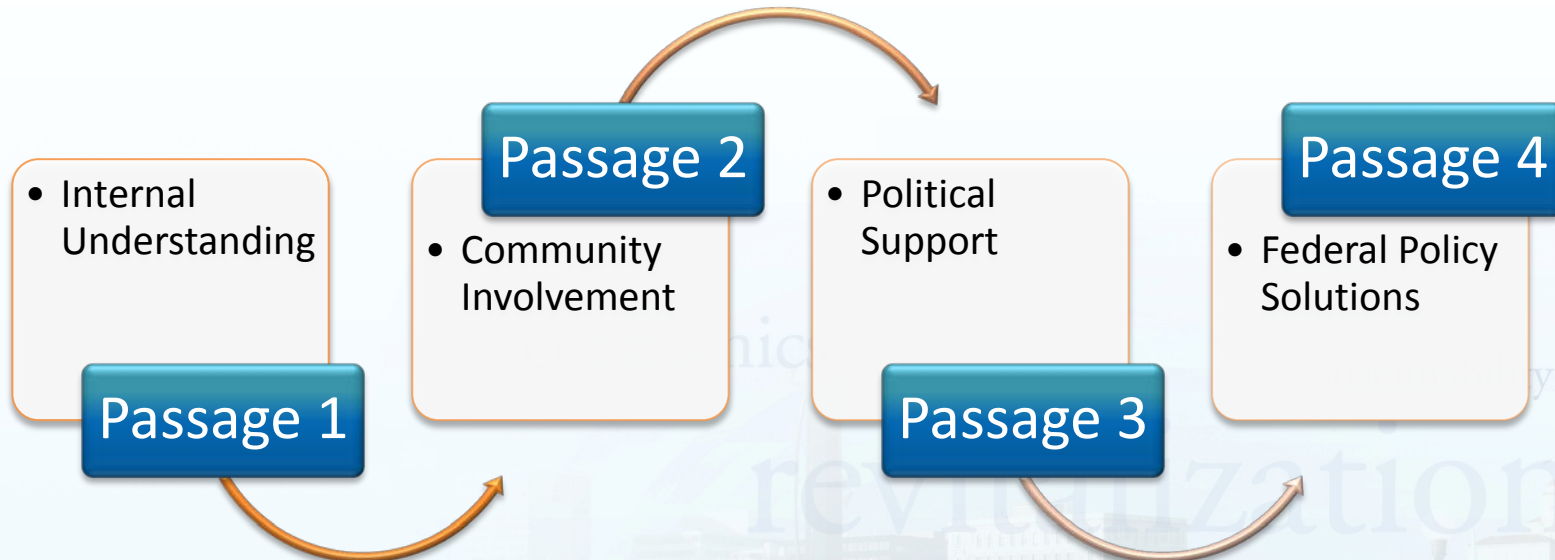
## “Make a Difference Day” cleanup

St. Clair Park, South Fairmount

October 22, 2011



# The “Getting to Yes” Pipeline



**Is it the Truth?**

**Is it FAIR to all concerned?**

*Rotary 4 Way Test*

**Will it build GOODWILL and BETTER FRIENDSHIPS**

**Will it be BENEFICIAL to all concerned?**

# **INTEGRATING WATER QUALITY WITH QUANTITY**

# Integrating Water Quality with Quantity



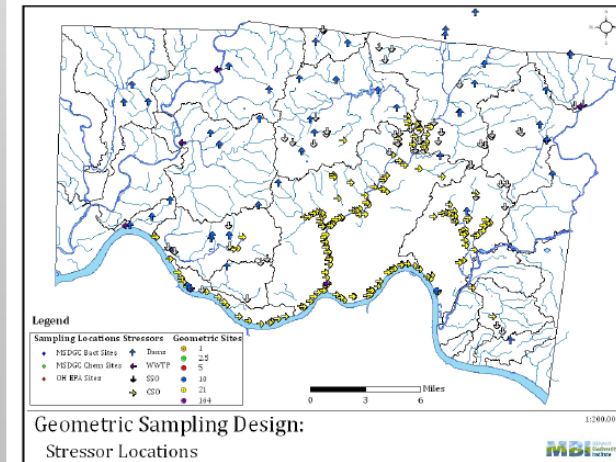
Midwest Biodiversity Institute  
Center for Applied Bioassessment & Biocriteria  
P.O. Box 21561  
Columbus, OH 43221-0561

## Water Quality Monitoring

- Basin Cycle  
(potential 4 year rotation)
- Planning began early 2011

### Watershed Monitoring and Bioassessment Plan for the MSD Greater Cincinnati Service Area

Midwest Biodiversity Institute  
Center for Applied Bioassessment & Biocriteria  
P.O. Box 21561  
Columbus, OH 43221-0561  
Chris O. Yoder, Principal Investigator  
[mbi@mwbinst.com](mailto:mbi@mwbinst.com)

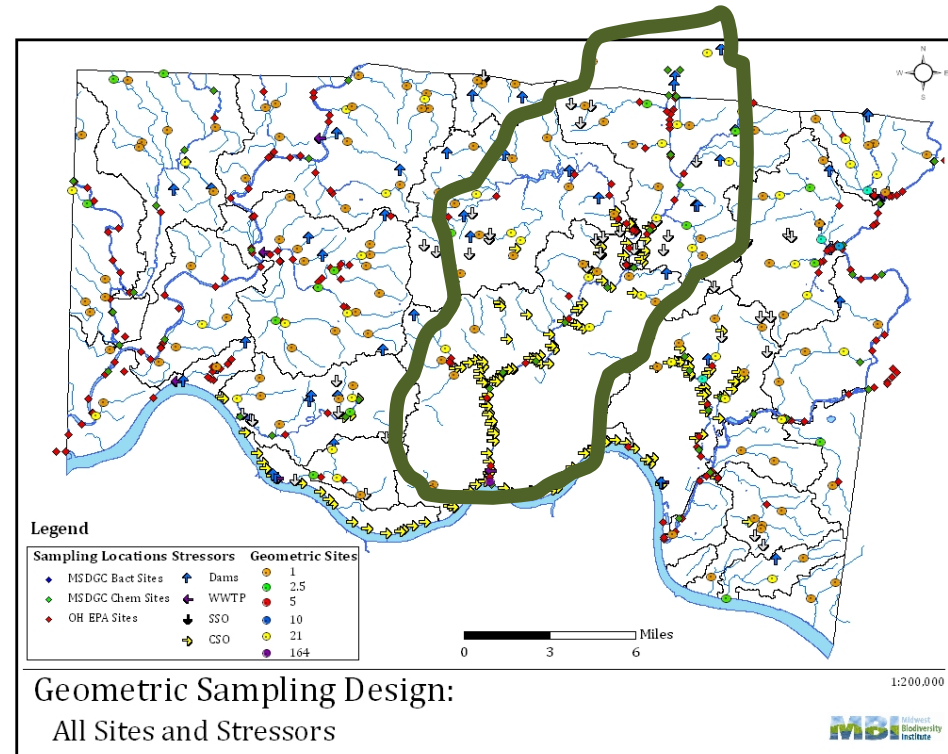


Geometric Sampling Design:  
Stressor Locations

# Water Quality Monitoring

## Mill Creek Basin (2011)

- Approx 100 sites, geometric, spatially derived for collection of biological, chemical and physical water quality data
- 2012 Development of an Integrated Priority System for identification of:
  - stressors
  - water quality impacts
  - water quality actions



# Analysis by USEPA

## Watersheds & Regional BMPs

- St Francis Apartments
  - Effectiveness of basin for retention, water quality
- Quebec Heights/Glenway Woods
  - Effectiveness of pre , post, peak flows
  - Water quality sampling
- Urban Soils & Hydrology Survey
  - Evaluate the characteristics of urban soils
- Buried Streams
  - Comparing nutrient cycle in covered vs. daylighted stream systems
- Water Quality Sampling
  - Sampling at Cincinnati State and EPA (pervious pavers)
- Biological Response to Green Systems



# LICK RUN MASTER PLAN



# Development of a Lick Run Master Plan

Current Conditions  
in the Community

Leverage  
MSD's Investment

Community's Vision  
for the Future

## Workshop #1 (August)

- Visual preference and surveys

THE IRER  
Property value at a substantial decline

## Workshop #2 (October)

- Review alternatives and options

Expand & improve  
parks and greenspaces

## Workshop #3 (February)

- Review Preliminary Master Plan

Draft Master Plan for  
Submittal to Policy  
Makers for Consideration

Improve traffic flow,  
pedestrian accessibility  
and safety

M  
Metropoli  
Investment to reduce sewer overflows  
and meet federal mandates



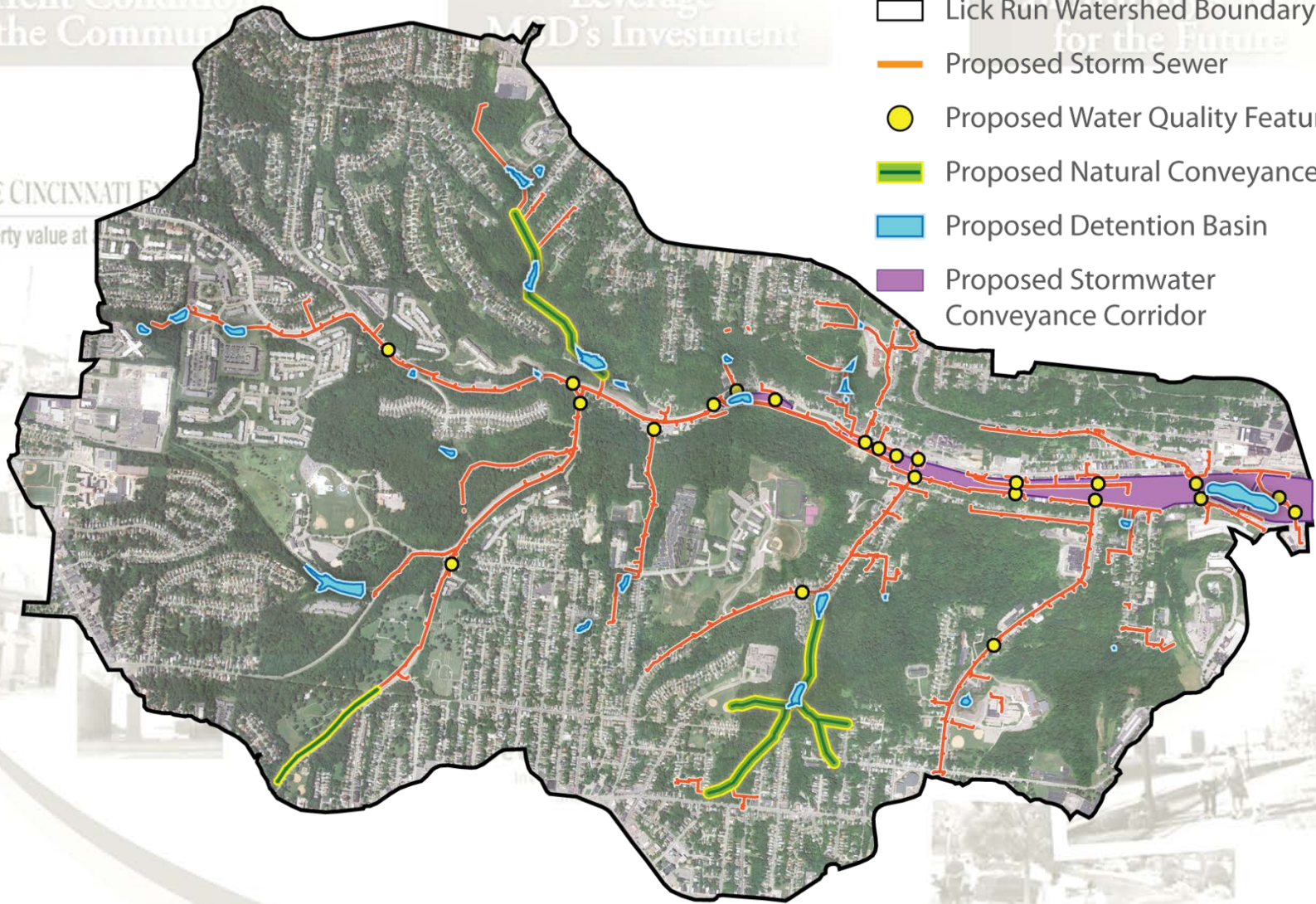
# Communities of the Future Solution

Current Conditions  
in the Community

Leverage  
MSD's Investment

Community's Vision  
for the Future

- Lick Run Watershed Boundary
- Proposed Storm Sewer
- Proposed Water Quality Features
- Proposed Natural Conveyance
- Proposed Detention Basin
- Proposed Stormwater Conveyance Corridor



THE CINCINNATI ENVI...

Property value at

# Lick Run Master Plan Components

Current Conditions  
in the Community

Maximize  
Leverage

Community's Vision  
for the Future

SOURCE CONTROL  
SOLUTIONS

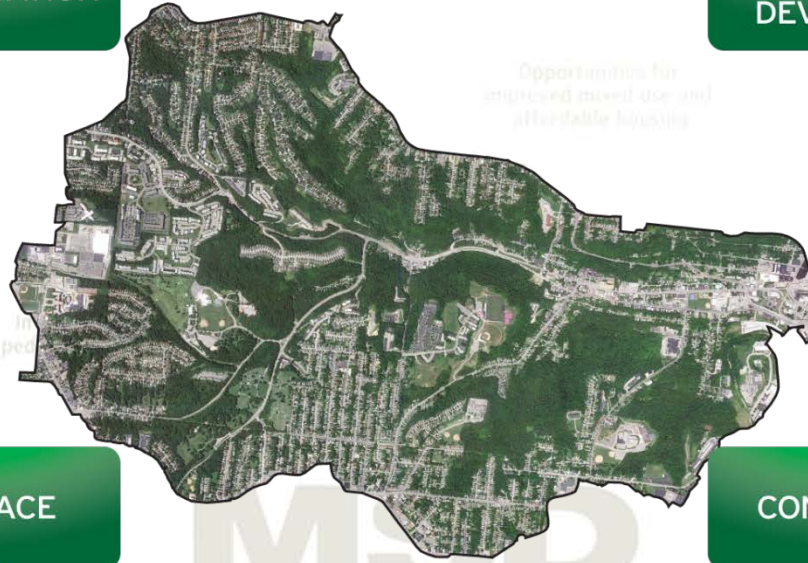
TRANSPORTATION

SUSTAINABLE  
DEVELOPMENT

OPEN SPACE

CONNECTIVITY

COMMUNITY  
DEVELOPMENT



Opportunities for  
improved mixed use and  
affordable housing

**MSD**  
Metropolitan Sewer District  
Investment to reduce sewer overflows  
and meet federal mandates

THE CINCINNATI

Property value at a subs



# Building Communities of the Future Solutions

Current Conditions  
in the Community



Leverage  
MSD's Investment



Community's Vision  
for the Future

THE CINCINNATI ENQUIRER

Property value at a substantial decline



Expand & improve  
parks and greenspaces

Opportunities for  
improved mixed use and  
affordable housing

Improve traffic flow,  
pedestrian accessibility  
and safety

Incentives for  
business retention  
or redevelopment

# MSD

Metropolitan Sewer District

Investment to reduce sewer overflows  
and meet federal mandates

economics  
sustainability  
infill  
jobs  
bike trails  
recreational  
opportunities  
community  
gardens  
better  
education  
quality place  
community assets



Community Design Workshop #1

August 11, 2011

# COMMUNITY DESIGN WORKSHOPS

# Community Design Workshop #1

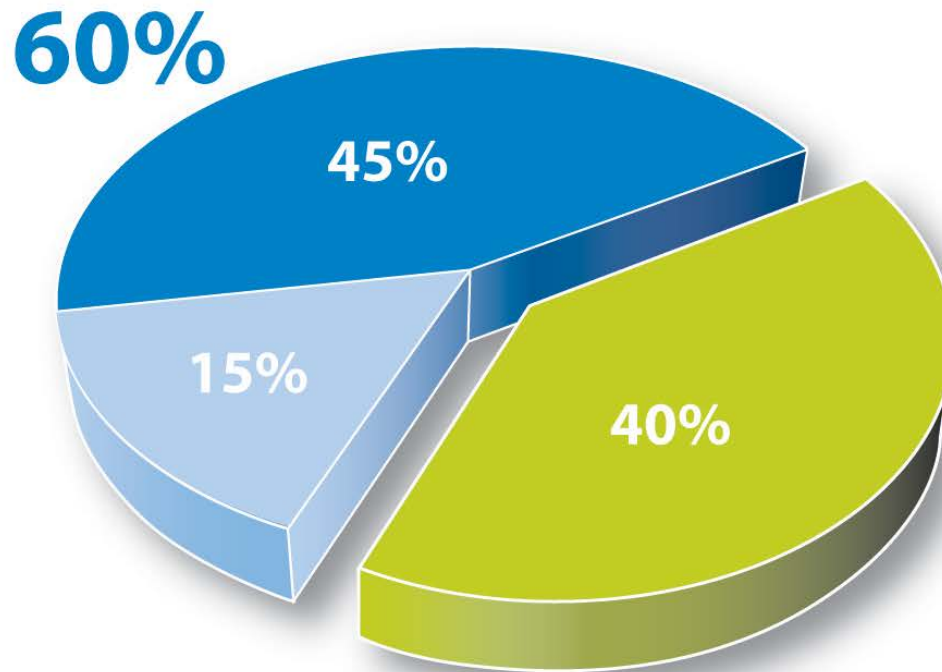


113

number of attendees at  
Community Design Workshop #1  
on August 11, 2011

# Community Design Workshop #1

- The majority of participants live in the Lick Run Watershed



# Break-out Sessions



## Introduction

Facilitators provided a brief overview of the content and objectives of the break-out session

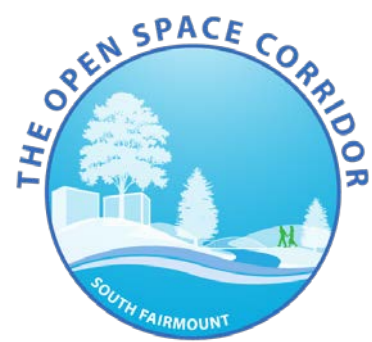
## Visual Preference Survey

Facilitators explained VPS displays

## Questions

Attendees responded to questions to provide feedback about priorities, ideas, and concerns





**A. WATERWAY CHARACTER** (pick all that apply)



 **THE OPEN SPACE CORRIDOR**

METROPOLITAN SEWER DISTRICT  
of greater  
**CINCINNATI**  **LICK RUN WATERSHED**  
Visual Preference Survey



**VISUAL PREFERENCE SURVEY SHEET**

**THE OPEN SPACE CORRIDOR**

COMMENTS

<b>A. WATERWAY CHARACTER</b> (pick all that apply)	1 2 3 4 5 6 Natural ←-----→ Urban 7 8 9 10 11 12	
<b>B. WATER QUALITY FEATURES</b> (pick all that apply)	1 2 3 4 5 6	
<b>C. SPECIAL WATER FEATURES</b> (pick all that apply)	1 2 3 4 5 6	
<b>D. GATHERING SPACES</b> (pick two from each row)	Personal 1 2 3 4 5 6 Group Open Landscape 1 2 3 4 5 6 Urban	
<b>E. RECREATION TYPES</b> (pick all that apply)	1 2 3 4 5 6 7 8 9 10 11 12 13	

METROPOLITAN SEWER DISTRICT  
of greater  
**CINCINNATI**  **LICK RUN WATERSHED**  
Visual Preference Survey



**QUESTIONS**

1. Which of the following statements best describes you?  
(fill in those that apply)

	Live	Work	Play	Pass Through
South Fairmount	<input type="radio"/>	<input type="radio"/>	<input type="radio"/>	<input type="radio"/>
Lick Run Watershed (inside of South Fairmount)	<input type="radio"/>	<input type="radio"/>	<input type="radio"/>	<input type="radio"/>
Outside of the Lick Run Watershed	<input type="radio"/>	<input type="radio"/>	<input type="radio"/>	<input type="radio"/>

2. The proposed urban waterway as a central feature could benefit the community. (circle one)

- I agree with this statement
- I disagree with this statement
- I have no opinion on the matter
- I am still forming my opinion

3. The potential open space corridor could benefit me because:  
(circle one)

- I would use the open space corridor (e.g., recreation, biking, hiking, community events)
- I would not use the open space corridor, but I like knowing that it is there
- I see no value in having an open space corridor

4. What are the most important **existing** open space areas and recreation facilities in the neighborhood?

---



---



---

5. Should **existing** open space areas and recreation facilities be improved and/or **new** uses be added? If so, how?

---



---



---

6. What is your favorite open space or park within the Cincinnati / Hamilton County region? Please explain. (you can list more than one)

---

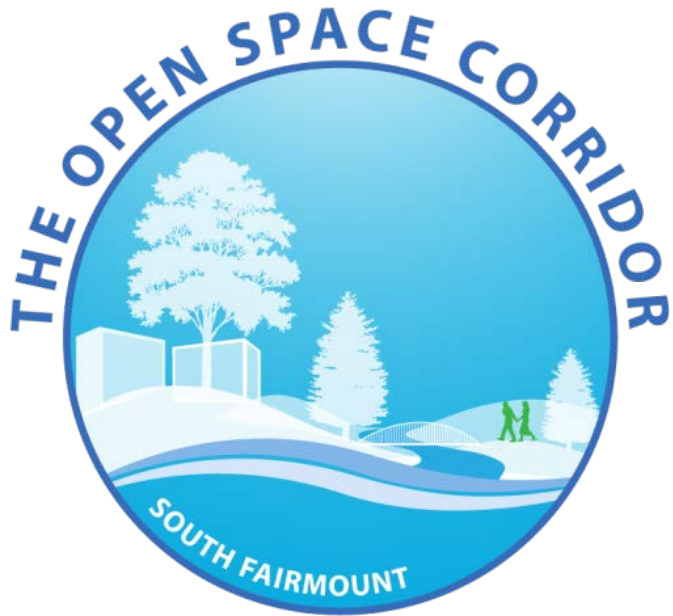


---



---

METROPOLITAN SEWER DISTRICT  
of greater  
**CINCINNATI**  **LICK RUN WATERSHED**  
Questions



“Make Lick Run beautiful and exciting and bring it into a very urban setting, where many people can enjoy it.”

- *Citizen employed in South Fairmount*

natural  
urban  
water  
community  
gathering spaces  
functional

## Waterway Character



Respondents preferred a natural-looking waterway that is compatible with an urban setting and that encourages interaction.

## Water Quality Features



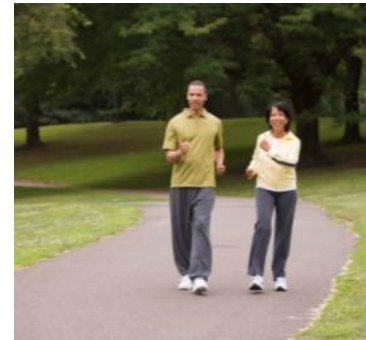
Well-planted, green features should be integrated throughout the proposed conveyance corridor to improve water quality.

## Special Water Features



The waterway character should include in-stream water features like mini waterfalls, pools and riffles. Interactive elements should also be incorporated, where possible.

## Gathering Spaces & Recreational Uses



The general preference was for open gathering spaces that allow for passive recreation and for community events. The potential open space network should include an assortment of active recreational uses, with an emphasis on bike and pedestrian trails.



“Focus on destinations, safety, walkability, local foods and community amenities.”

- *South Fairmount Resident*

pedestrian  
character  
street  
trees  
neighborhood  
business  
historic  
green

## Architectural Types & Styles



Architectural types and styles should primarily be historic and traditional with the potential for well-integrated modern architecture.

## Building Uses



Respondents preferred mixing uses as part of a vibrant live/work zone, reusing existing buildings where possible, and including basic services (e.g., grocery store, pharmacy) in the business district.

## Parking



Parking needs in the business district would be best served by a mixture of on-street and surface lots integrated between buildings.

## Streets



Respondents preferred neighborhood-scale street corridors with spaces for gathering, improved lighting, and plenty of amenities. Nearly all respondents said existing traffic patterns need to change for the business district to be successful.



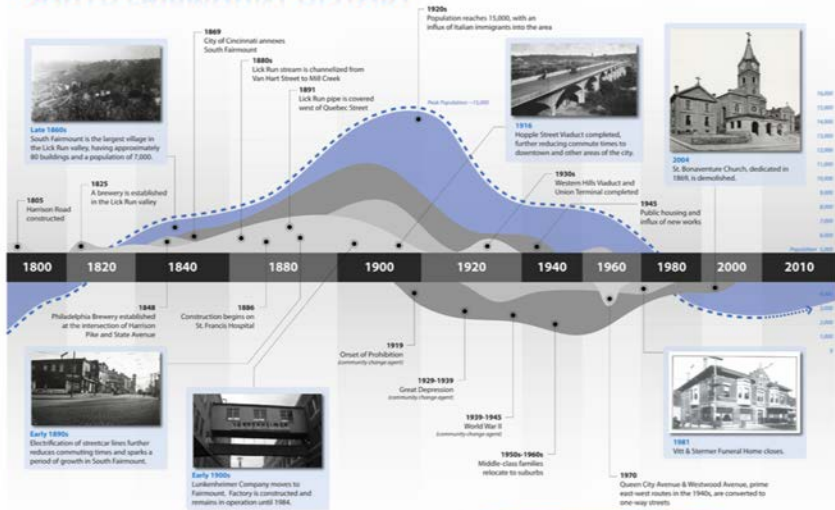
“Historic buildings are important, but it is also about the people, the culture.”

*-Citizen’s comment during break-out session*

San Antonio Church  
Little Italy  
St. Francis Hospital  
Harrison  
Italian  
Westwood Railroad  
German  
Westwood Avenue  
Annie Oakley gun show  
Lunkenheimer



# SOUTH FAIRMOUNT HISTORY



# SOUTH FAIRMOUNT HISTORY



1913 South Fairmount viewed from the south.



Early 1900s Mill Creek Valley



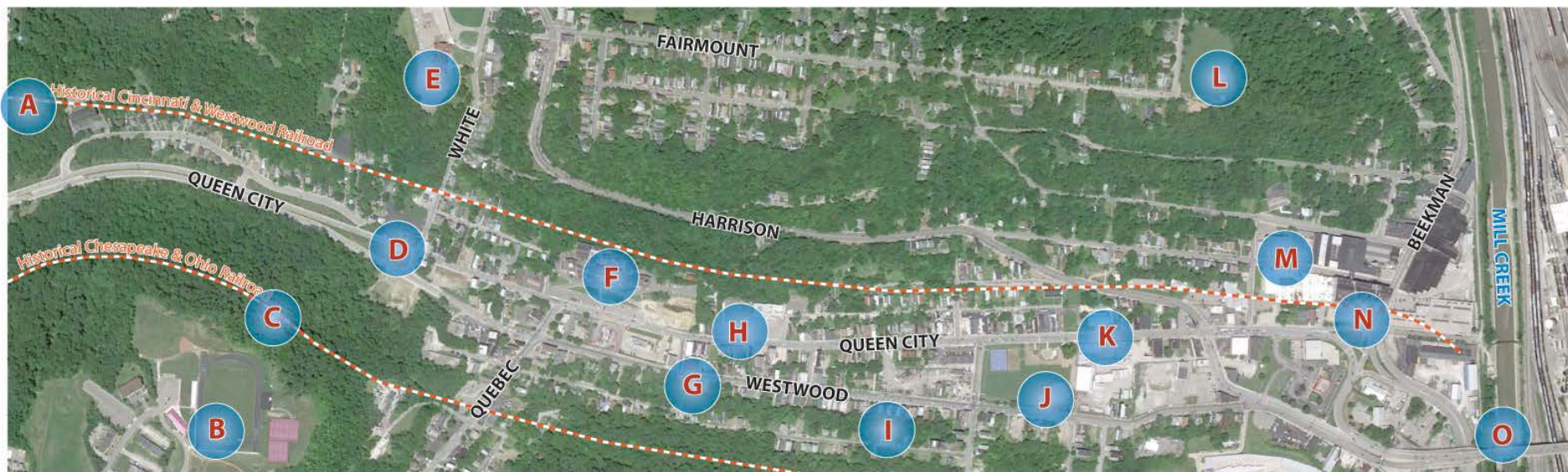
1920s South Fairmount showing St. Francis Hospital, St. Bonaventura Church, and other buildings along Queen City and Westwood avenues.



1931 The Wabash Mills at the intersection of Queen City and Harrison avenues.



1931 Wabash Mills Viaduct connects South Fairmount with other parts of the city. Wabash Mill background was quarried for the construction of Union Terminal (1933).





“Green planning should be the overall vision for the community.”  
- South Fairmount Resident

natural  
Keep development  
green  
trees  
hillsides  
bike lanes  
development

## Green Planning Principles



Respondents supported integrating green planning principles, like green infrastructure, for responsible and sustainable stormwater management.

## Natural Resources



The watershed's physical assets (e.g., forested hillsides, parks, and open spaces) should be preserved and responsibly managed for environmental benefits.

## Connectivity



Respondents overwhelmingly supported complete streets concepts , improving pedestrian safety, and enhancing watershed connectivity with accessible trail networks that complement the immediate surroundings.

## Aesthetics



Aesthetic preferences focused on natural materials like wood and stone. Structures and bridges should be well integrated with the watershed's unique physical characteristics.

# Exit Survey Results

**90%** of exit survey respondents felt better informed after attending Community Design Workshop #1

**84%** of break-out session participants believe the proposed urban waterway as a central feature in South Fairmount could benefit the community

Nearly all respondents said that a **strong neighborhood core** is important to the future of South Fairmount

A majority identified **existing traffic patterns** as a major obstacle for the neighborhood

# Exit Survey Results

- Based on exit survey results, respondents support MSD's investment in the Lick Run Alternative

**alternative solution (89%)**



**deep tunnel (11%)**



# QUESTIONS – FEEDBACK ON DESIGN WORKSHOP #1

# Community Design Workshop #2



**Wednesday, October 26, 2011**

6:00 – 9:00

Gilbert A. Dater Montessori  
2840 Boudinot Avenue (45238)

## **Objective**

Review conceptual alternatives  
and options

Create a watershed planning  
framework



# Community Design Workshop #2

**Doors Open/Sign-In (6:00)**

**Introduction (6:30)**

Project background

Summary of CDW#1 results

Objective of CDW#2

Technical basis & design constraints

**Small Group Sessions (7:30)**

Watershed-Wide Opportunities

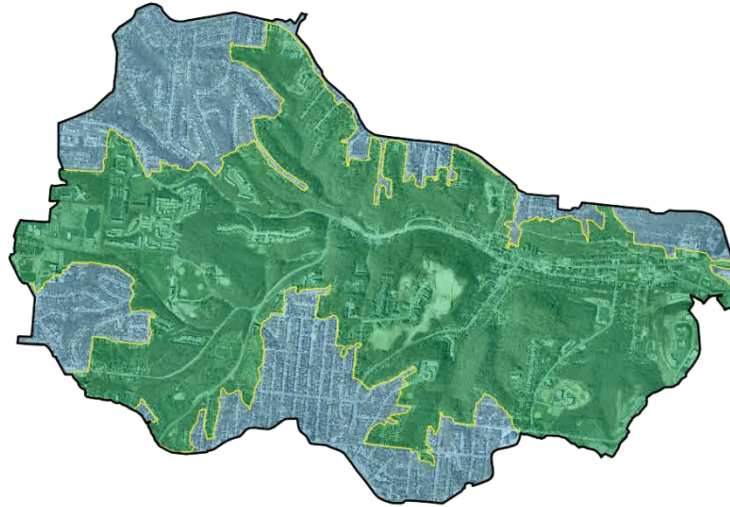
Central Valley Focus Area Alternatives



# Community Design Workshop #2

## Watershed-Wide Opportunities

Gain community input on a watershed planning framework



### **GREEN PLANNING PRINCIPLES**

Hillside Preservation & Management  
Stormwater Management and BMPs  
Sustainable Development Transects

### **TRAIL NETWORK OPPORTUNITIES**

Open Space Corridor Trails  
Cultural/Interpretive Trails  
Commuter and Recreation Trails

### **TRANSPORTATION NETWORK OPPORTUNITIES**

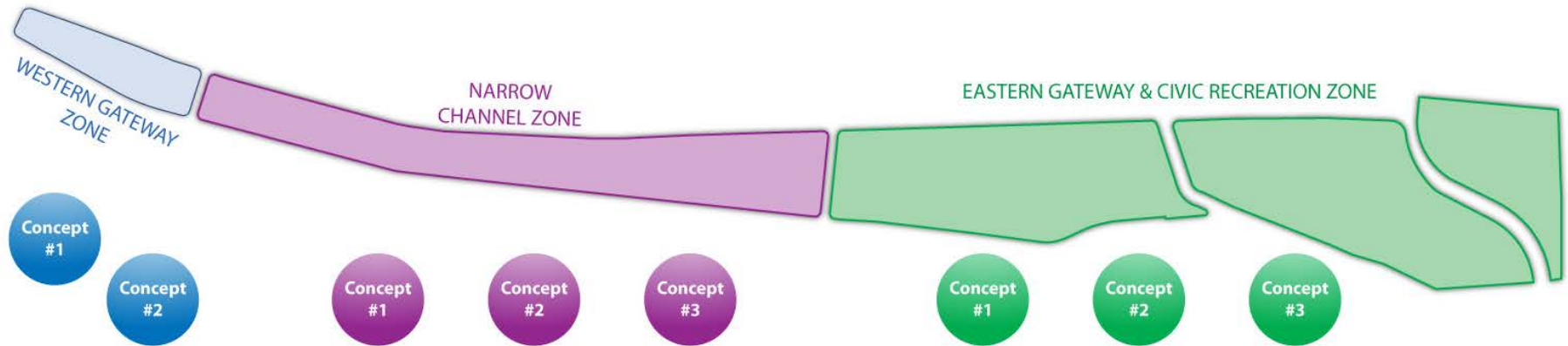
Westwood Avenue Alternatives  
Queen City Avenue Alternatives  
Livability Principles/Safety Enhancements  
Transportation Choices

### **COMMUNITY DEVELOPMENT STRATEGIES**

Existing Framework  
Filling in Gaps  
Attracting Opportunities for Revitalization

# Community Design Workshop #2

## Central Valley Focus Area Alternatives



Present a series of conceptual alternatives for three distinct zones within the proposed conveyance corridor and ask participants to identify **strengths & weaknesses of each zone concept**

# Breakout Discussions

- Policy Subcommittee (Room 106)
  - Gap Analysis Discussion
- Inform & Influence Subcommittee (105)
  - Design Workshop #2 Planning
  - Creation of “champions” that work partnership with MSD and its partner agencies
- Economic Development Subcommittee (129)
  - Lick Run Project Area Economic Development Needs: Short-term vs. Long-Term