



PROJECT GROUNDWORK
your pipeline to clean water

Ault Park Stream Restoration Fact Sheet

The Metropolitan Sewer District of Greater Cincinnati (MSD) — in partnership with the Cincinnati Park Board and Hamilton County Soil & Water Conservation District — is undertaking a stream restoration/storm sewer separation project in Ault Park. It will eliminate about 17 million gallons of sewer overflows a year into nearby Duck Creek. MSD is working to minimize construction impacts to neighbors and park visitors.

What's the Issue?

During heavy rains, raw sewage — mixed with storm water — overflows from our sewers into local rivers and streams and can also back up into basements.

The vast majority of overflows occur from combined sewers, which carry both sewage and stormwater in the same pipe.

When large amounts of stormwater enter combined sewers, these pipes are often filled beyond their capacity and can overflow directly into local waterways through outfalls known as combined sewer overflows or CSOs.

Hamilton County is among the top five locations in the nation for urban CSOs. Overflows occur as many as 105 times a year at some locations.

What's the Solution?

To resolve this public health and environmental issue, MSD has embarked on the largest public works project in the history of our community to rebuild and improve our sewer system.

Called **Project Groundwork**, this multi-year and multi-billion dollar initiative includes hundreds of sewer improvements and stormwater control projects. Types of projects include:

- Construction of larger sewers or underground storage tunnels to handle or capture excess wastewater.
- Upgrading of wastewater treatment plants or construction of facilities to treat flows at the CSO prior to discharge.
- Projects that prevent/control stormwater from entering combined sewers.



Brian Bohl of the Hamilton County Soil & Water Conservation District helped organize an inventory of salamanders and other aquatic organisms in the creek as part of a baseline biological survey. The organisms were then relocated to an upstream area.

The Issue in Ault Park

A combined sewer runs beneath the creek bed of an unnamed tributary of Duck Creek in Ault Park. There are stormwater inlets along the length of the creek. When it rains, the stormwater enters the combined sewer through the inlets instead of flowing naturally down the hillside to Duck Creek.

During heavy rains, the combined sewer is filled beyond its capacity with stormwater and raw sewage and overflows into Duck Creek at CSO 503. About 20 million gallons overflow annually, causing odors and leaving behind unsightly debris. Combined sewage also can surcharge back into the creek bed.

The Solution in Ault Park

MSD is partnering with the Cincinnati Park Board and Hamilton County Soil & Water Conservation District to implement a unique solution — the first of its kind in Hamilton County — to eliminate 85% or 17 million gallons a year of overflows from CSO 503 into Duck Creek.

MSD is restoring — or daylighting — the unnamed ephemeral creek so it can receive and handle flows after rainstorms and snow melts and transport them directly to Duck Creek. This solution focuses on controlling overflows by reducing the amount of stormwater entering the combined sewer.

The creek will be restored through streambank restabilization (e.g., planting native riparian species such as sedges and wildflowers and replacing trees that are removed in a 3:1 ratio), which will reinforce the creek bed and improve the park's habitat. In addition, MSD will add more natural features to the creek such as log and rock drop structures.

The project also includes:

- Closing nine stormwater inlets along the creek so the flow can no longer enter the combined sewer.
- Installing a 60-inch-diameter dedicated underground storm sewer culvert beneath Observatory Avenue in Ault Park (in the vicinity of the pull-off for the Valley Trail) to address stormwater flows that begin on the west side of the road. The underground pipe will connect to the restored creek on the east side of the road.
- Installing a special valve at CSO 503 to close off the connection between Duck Creek and the combined sewer to prevent the creek from backing up into the sewer. The combined sewer will remain in place and continue to carry sanitary sewage flows (and a much smaller amount of stormwater runoff) to the Little Miami plant in the East End.

Schedule

The Ault Park stream separation project is scheduled to begin in mid-December 2011 and to be completed by May 2013.

The construction will not impact events planned in Ault Park — e.g., weddings and dances — during this time period; all project work will be halted during the programs.

Working hours for construction will be during daylight hours only. Work may be conducted on weekends to maintain the construction schedule.

Traffic

Two-way traffic will be maintained along Observatory Avenue in Ault Park, with the exception of temporary lane closures associated with the construction of the stormwater culvert underneath the roadway. Parking will still be available in the two outer lanes, except in the vicinity of the construction of the new culvert.

Construction equipment and vehicles will be staged on the park grounds.

Valley Trail

Portions of the existing creek bed that will be restored in this project run adjacent to the Valley Trail, a gravel trail popular for walking and running in Ault Park.

The trail will be used as access to the creek for stream restoration activities; therefore, it will be closed during the project for safety reasons.

Signs will be posted along trail heads to alert users of closed areas. Reopening of the Valley Trail is expected to occur after construction is complete. After it is reopened, pedestrians will be able to enjoy the restored stream flowing along the trail.

Restoration

Observatory Avenue

The roadway will be restored to its original state once the construction is completed.

Valley Trail

The trail will be restored to its original state once the construction is completed.

Temporary Inconveniences

During construction, area residents can expect the following inconveniences:

- Temporary lane closures on Observatory Avenue during construction of the stormwater culvert beneath the roadway. Traffic flow will still be maintained, but delays are possible at times.
- Closure of the Valley Trail for safety reasons.
- Concrete barricades and fencing.
- Vibrations, dirt/dust and noise.

Safety

- Expect delays in and around the construction area.
- Follow the speed limit. Speed limits in construction zones are frequently lower than normal.
- Children are often curious about construction sites. Keep them away from machinery, trenches and pits at all times to avoid accidents.
- If you become aware of a public safety hazard, please call 911 immediately. If you see a potentially unsafe situation or equipment/fencing that requires repair, please contact the MSD Engineering Customer Service Line at (513) 557-3594.

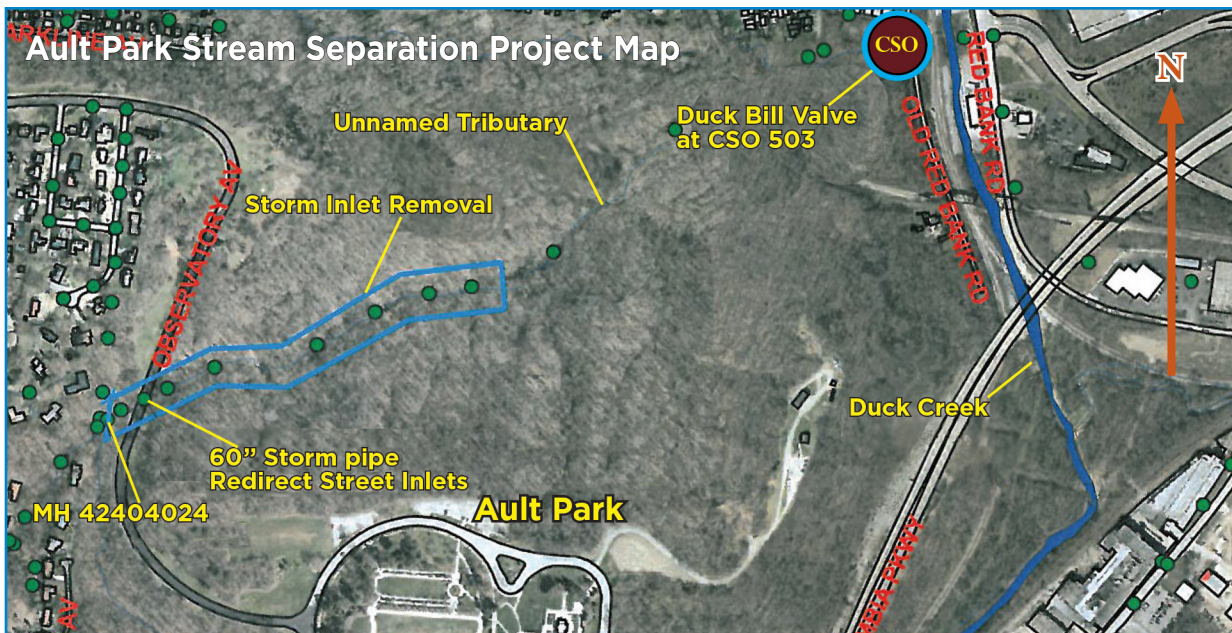
Need More Information?

For more information:

www.projectgroundwork.org/aultpark

**MSD Engineering Customer Service Line
(513) 557-3594**

MSD.Communications@cincinnati-oh.gov



CINCINNATI

